



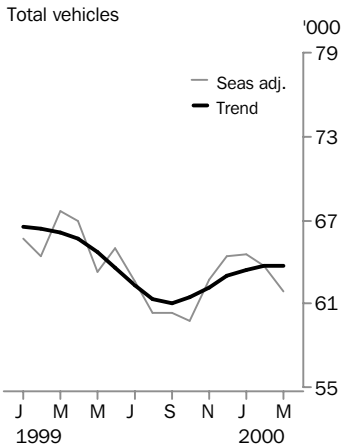
NEW MOTOR VEHICLE REGISTRATIONS

AUSTRALIA
PRELIMINARY

EMBARGO: 11:30AM (CANBERRA TIME) MON 1 MAY 2000

MARCH KEY FIGURES

New vehicle registrations



TREND ESTIMATES

	Mar 2000	% change Feb 2000 to Mar 2000	% change Mar 1999 to Mar 2000
Total new motor vehicle registrations	63 719	0.0	-3.7
Passenger vehicles	52 676	0.3	-5.4
Other vehicles	11 043	-1.3	5.7

SEASONALLY ADJUSTED

	Mar 2000	% change Feb 2000 to Mar 2000	% change Mar 1999 to Mar 2000
Total new motor vehicle registrations	61 869	-2.8	-8.6
Passenger vehicles	51 368	-2.0	-9.7
Other vehicles	10 501	-6.3	-2.4

ORIGINAL ESTIMATES

	Mar 2000	% change Feb 2000 to Mar 2000	% change Mar 1999 to Mar 2000
Total new motor vehicle registrations	67 746	8.9	-11.1
Passenger vehicles	56 285	9.5	-12.1
Other vehicles	11 461	6.0	-6.0

MARCH KEY POINTS

TREND ESTIMATES

- The trend estimate for total new motor vehicle registrations remained steady in March 2000 compared with the previous month. This follows consecutive monthly rises since September 1999. The estimate for passenger vehicles rose by 0.3% while that for other vehicles fell by 1.3%.

TAKE CARE!
Trend estimates are revised as new monthly data become available.

SEASONALLY ADJUSTED ESTIMATES

- The seasonally adjusted estimate for total new motor vehicle registrations fell by 2.8% in March 2000 compared with the previous month. The estimate for passenger vehicles fell by 2.0% and that for other vehicles fell by 6.3%.

ORIGINAL ESTIMATES

- The original estimate for total new motor vehicle registrations rose by 8.9% in March 2000 compared with the previous month. The estimate for passenger vehicles rose by 9.5% and that for other vehicles rose by 6.0%.

For further information about these and related statistics, contact Ray Pfrunder on Brisbane 07 3222 6179, or the National Information Service on 1300 135 070.

NOTES

FORTHCOMING ISSUES

ISSUE	RELEASE DATE
April 2000	26 May 2000
May 2000	30 June 2000
June 2000	28 July 2000
July 2000	25 August 2000
August 2000	29 September 2000
September 2000	27 October 2000

CHANGES IN THIS ISSUE

There are no changes in this issue.

TREND REVISIONS

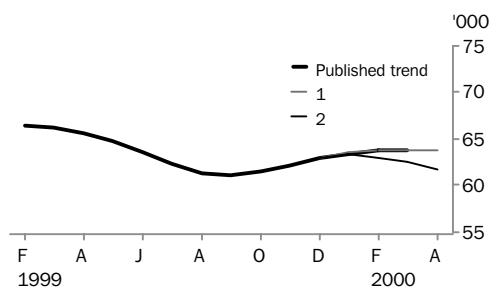
The most recent trend estimates are likely to be revised when new seasonally adjusted estimates become available.

The graph below presents the effect of two possible scenarios on the previous trend estimates:

- 1 The April seasonally adjusted estimate for total vehicle registrations is higher than the March seasonally adjusted estimate by 3.8%.
- 2 The April seasonally adjusted estimate for total vehicle registrations is lower than the March seasonally adjusted estimate by -3.8%.

The percentage change of 3.8% was chosen because the average absolute percentage change, based on the last 11 years, has been 3.8%.

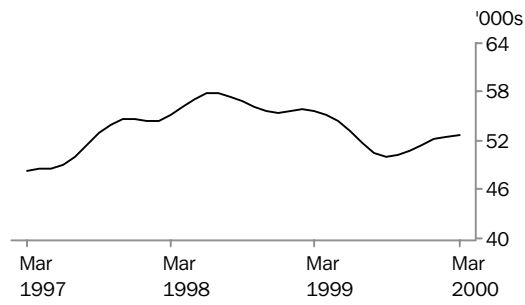
TAKE CARE!
Trend estimates are revised as new monthly data become available.



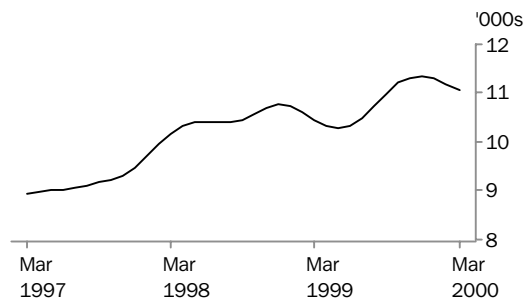
Dennis Trewin
Acting Australian Statistician

VEHICLE REGISTRATIONS BY TYPE: Trend series

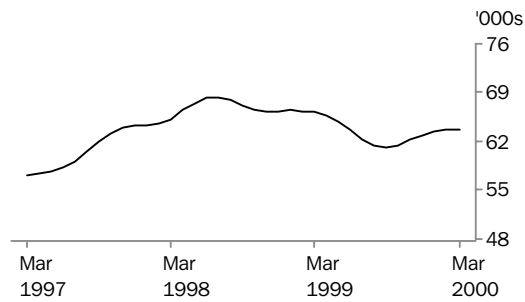
PASSENGER VEHICLES



OTHER VEHICLES



TOTAL VEHICLES (EXCLUDING MOTOR CYCLES)



NEW MOTOR VEHICLES, Registrations By Type: All series(a)

<i>Month</i>	<i>Passenger vehicles</i>	<i>Other vehicles</i>	<i>Total</i>
ORIGINAL			
1999			
January	42 137	7 954	50 091
February	50 775	9 557	60 332
March	64 011	12 190	76 201
April	50 963	9 005	59 968
May	53 036	10 862	63 898
June	65 067	14 428	79 495
July	53 161	11 253	64 414
August	49 668	10 224	59 892
September	49 104	10 111	59 215
October	46 856	10 028	56 884
November	54 009	11 853	65 862
December	54 941	11 705	66 646
2000			
January	42 236	8 021	50 257
February	51 401	10 810	62 211
March	56 285	11 461	67 746
SEASONALLY ADJUSTED			
1999			
January	54 587	11 097	65 684
February	53 931	10 419	64 350
March	56 902	10 758	67 660
April	56 949	10 004	66 953
May	53 319	9 950	63 269
June	54 554	10 422	64 976
July	51 788	10 825	62 613
August	49 604	10 745	60 349
September	49 685	10 697	60 382
October	48 924	10 915	59 839
November	51 150	11 552	62 702
December	52 343	12 122	64 465
2000			
January	53 510	11 027	64 537
February	52 427	11 209	63 636
March	51 368	10 501	61 869
TREND ESTIMATES			
1999			
January	55 702	10 742	66 444
February	55 803	10 611	66 414
March	55 696	10 450	66 146
April	55 289	10 333	65 622
May	54 458	10 295	64 753
June	53 241	10 344	63 585
July	51 815	10 490	62 305
August	50 612	10 720	61 332
September	50 071	10 982	61 053
October	50 277	11 205	61 482
November	50 896	11 325	62 221
December	51 609	11 356	62 965
2000			
January	52 158	11 304	63 462
February	52 510	11 188	63 698
March	52 676	11 043	63 719

(a) Trend estimates for September 1999 to February 2000 have been revised.

NEW MOTOR VEHICLES, Registrations By Type: **Original**

Month	Passenger vehicles	Light commercial vehicles	Rigid trucks	Articulated trucks	Non-freight carrying trucks	Buses	Total (excludes motor cycles)	Motor cycles
1999								
January	42 137	6 823	625	207	43	256	50 091	2 178
February	50 775	7 996	942	247	57	315	60 332	2 451
March	64 011	10 230	1 215	310	111	324	76 201	2 720
April	50 963	7 434	976	265	79	251	59 968	2 195
May	53 036	8 988	1 200	342	80	252	63 898	2 437
June	65 067	12 053	1 476	436	108	355	79 495	2 498
July	53 161	9 364	1 047	363	137	342	64 414	2 656
August	49 668	8 456	1 099	302	139	228	59 892	2 578
September	49 104	8 203	1 227	321	80	280	59 215	2 898
October	46 856	8 215	1 119	345	83	266	56 884	2 897
November	54 009	9 793	1 245	358	128	329	65 862	3 179
December	54 941	9 715	1 249	268	96	377	66 646	2 850
2000								
January	42 236	6 821	673	186	48	293	50 257	2 425
February	51 401	9 102	997	278	70	363	62 211	2 604
March	56 285	9 580	1 188	290	52	351	67 746	2 996

NEW MOTOR VEHICLES, Registrations By State: All series(a)

Month	New South Wales	Victoria	Queensland	South Australia	Western Australia	Tasmania	Northern Territory	Australian Capital Territory	Australia
ORIGINAL									
1999									
January	17 168	12 677	9 449	3 045	5 402	976	442	932	50 091
February	20 483	15 786	11 371	3 923	6 104	928	650	1 087	60 332
March	26 240	19 529	14 784	4 809	7 395	1 227	916	1 301	76 201
April	20 664	17 003	9 460	3 815	6 069	1 098	826	1 033	59 968
May	23 163	16 427	11 134	3 966	6 203	1 113	772	1 120	63 898
June	27 343	20 672	14 796	4 694	8 577	1 129	884	1 400	79 495
July	24 236	17 591	10 264	4 118	5 010	1 349	634	1 212	64 414
August	21 102	16 298	9 852	3 851	5 807	1 270	613	1 099	59 892
September	20 647	16 568	9 563	3 651	5 629	1 458	693	1 006	59 215
October	20 130	15 775	8 963	3 659	5 635	1 130	609	983	56 884
November	24 536	17 771	9 919	4 335	6 134	1 256	700	1 211	65 862
December	23 301	17 884	10 939	4 423	6 385	1 899	628	1 187	66 646
2000									
January	16 996	14 991	8 221	2 926	4 842	952	471	858	50 257
February	22 131	16 613	11 056	3 868	5 785	992	587	1 179	62 211
March	23 811	17 537	13 276	3 995	6 189	1 128	659	1 151	67 746
SEASONALLY ADJUSTED									
1999									
January	22 636	17 447	11 924	4 065	6 411	1 346	624	1 231	65 684
February	21 752	16 692	12 289	4 114	6 396	1 172	747	1 188	64 350
March	22 865	17 247	13 033	4 489	6 810	1 287	747	1 182	67 660
April	22 876	18 929	11 119	4 089	6 594	1 422	775	1 149	66 953
May	22 029	16 843	10 939	4 078	6 338	1 179	691	1 172	63 269
June	22 805	17 135	11 107	4 007	6 989	1 156	642	1 135	64 976
July	23 381	17 038	10 047	3 992	5 079	1 252	657	1 167	62 613
August	21 162	16 328	10 170	3 788	5 988	1 192	668	1 053	60 349
September	21 574	16 437	10 000	3 598	5 842	1 255	710	966	60 382
October	21 621	16 384	9 267	3 824	5 862	1 142	657	1 082	59 839
November	22 368	17 192	10 020	4 107	5 848	1 222	740	1 205	62 702
December	24 074	16 437	10 793	4 180	5 976	1 247	687	1 071	64 465
2000									
January	21 347	20 405	9 749	3 882	6 033	1 327	667	1 127	64 537
February	22 352	17 104	11 459	3 950	5 643	1 197	657	1 274	63 636
March	21 837	15 265	12 828	3 630	5 592	1 190	514	1 013	61 869
TREND ESTIMATES									
1999									
January	22 586	17 322	12 659	4 180	6 510	1 262	717	1 208	66 444
February	22 557	17 471	12 419	4 197	6 573	1 272	725	1 200	66 414
March	22 568	17 546	12 050	4 198	6 596	1 273	726	1 189	66 146
April	22 604	17 525	11 627	4 167	6 541	1 266	718	1 174	65 622
May	22 582	17 376	11 182	4 096	6 411	1 251	703	1 152	64 753
June	22 439	17 151	10 733	3 993	6 224	1 233	685	1 127	63 585
July	22 248	16 823	10 330	3 893	6 025	1 211	673	1 102	62 305
August	22 085	16 560	10 019	3 837	5 879	1 201	671	1 080	61 332
September	22 035	16 567	9 829	3 844	5 820	1 202	682	1 074	61 053
October	22 112	16 836	9 811	3 892	5 836	1 217	694	1 084	61 482
November	22 233	17 168	9 982	3 939	5 871	1 229	694	1 105	62 221
December	22 340	17 399	10 338	3 964	5 884	1 234	680	1 126	62 965
2000									
January	22 369	17 467	10 792	3 953	5 848	1 237	657	1 139	63 462
February	22 334	17 377	11 283	3 916	5 780	1 236	629	1 143	63 698
March	22 210	17 159	11 783	3 868	5 728	1 230	599	1 142	63 719

(a) Trend estimates for September 1999 to February 2000 have been revised.

NEW PASSENGER VEHICLES, Top Make/models: **Original**—March 2000

<i>Make/Model</i>	<i>New South Wales</i>	<i>Victoria</i>	<i>Queensland</i>	<i>South Australia</i>	<i>Western Australia</i>	<i>Tasmania</i>	<i>Northern Territory</i>	<i>Australian Capital Territory</i>	Australia
Holden									
Commodore/Calais	2 545	2 193	1 449	596	557	106	50	171	7 667
Astra	353	307	131	63	70	17	1	14	956
Vectra	278	272	113	32	51	17	2	16	781
Other	516	440	336	74	149	25	9	20	1 569
Total	3 692	3 212	2 029	765	827	165	62	221	10 973
Toyota									
Camry/Vienta	1 087	742	507	161	273	77	111	60	3 018
Corolla	976	602	570	118	218	47	12	39	2 582
Echo	484	350	160	56	160	13	9	21	1 253
Other	910	524	760	144	311	40	83	33	2 805
Total	3 457	2 218	1 997	479	962	177	215	153	9 658
Ford									
Falcon/Fairmont	1 709	1 730	985	300	458	58	33	71	5 344
Laser	249	214	127	43	45	26	2	17	723
Festiva	210	148	157	90	29	12	3	13	662
Other	209	286	145	32	55	9	8	12	756
Total	2 377	2 378	1 414	465	587	105	46	113	7 485
Mitsubishi									
Magna	534	535	386	261	153	38	16	66	1 989
Lancer	505	612	293	84	222	18	7	69	1 810
Pajero	172	101	130	50	63	14	7	6	543
Other	438	217	179	58	63	9	5	33	1 002
Total	1 649	1 465	988	453	501	79	35	174	5 344
Hyundai									
Excel	988	750	554	208	419	54	27	43	3 043
Lantra	373	165	160	57	113	31	9	15	923
Sonata	110	84	80	7	29	4	4	4	322
Other	79	43	73	16	25	4		3	243
Total	1 550	1 042	867	288	586	93	40	65	4 531
Nissan									
Pulsar	640	403	355	67	142	27	18	40	1 692
Patrol	189	160	153	39	78	12	10	15	656
Maxima	126	124	69	18	40	2	1	6	386
Other	139	80	80	14	16	3	2	4	338
Total	1 094	767	657	138	276	44	31	65	3 072
Honda									
CRV	511	338	148	41	98	20	7	4	1 167
Civic	317	187	76	31	58	9	1	15	694
Accord	91	77	51	13	33	1	2	3	271
Other	201	139	93	19	41	10	1	5	509
Total	1 120	741	368	104	230	40	11	27	2 641

EXPLANATORY NOTES

INTRODUCTION

- 1** This publication presents monthly data for registrations of new motor vehicles.
- 2** The statistics in this publication use the Vehicle Identification Number (VIN), adopted by the State and Territory motor vehicle registration authorities. The information contained in the VIN allows more accurate classification of vehicles. In the case of some States, data processed using the VIN system are not strictly comparable with data processed prior to December 1990.

SCOPE AND COVERAGE

- 3** Motor vehicle registration statistics are obtained from State and Territory motor vehicle registration authorities. The statistics reflect information recorded in registration documents. While the statistics do not depart significantly from actual registrations during the period, a number of registrations processed in a month actually relate to vehicles registered prior to that month.
- 4** New motor vehicle registrations are obtained from New South Wales, Victoria, Queensland and Western Australia registration authorities on a weekly basis. Other registries provide data for each calendar month. The ABS processes the weekly registration data provided for the above-mentioned States and includes data for the relevant month in this publication. Data referring to the next month are withheld and included in the next month's publication. In some months, the ABS processes five weeks of data for the above States, while other months include four weeks of data. In months where five weeks of data are processed and depending on the actual pattern of registration processing, it is possible that there will be a greater number of registrations recorded because the carry forward from the previous month is likely to be greater than the carry over to the next month.
- 5** The scope of the statistics:
 - includes:
 - passenger vehicles
 - light commercial vehicles
 - trucks
 - buses
 - motorcycles (note: not included in totals)
 - vehicles with diplomatic and consular plates
 - State and Commonwealth owned vehicles
 - excludes:
 - vehicles belonging to the defence forces
 - recreation vehicles such as trail bikes and sand dune buggies (in those States where registration is required).

SEASONAL ADJUSTMENT

- 6** Seasonal adjustment is a means of removing the estimated effects of normal seasonal variation from the series so that the effects of other influences can be more clearly recognised.
- 7** Seasonal adjustment does not remove from the series the effect of irregular or non-seasonal influences (e.g. the introduction of new models, processing delays, industrial disputes).

EXPLANATORY NOTES

SEASONAL ADJUSTMENT

continued

8 Irregular influences that are highly volatile can make it difficult to interpret the series even after adjustment for seasonal variation.

9 Extreme care should be exercised in using the seasonally adjusted series for new motor vehicle registrations in Tasmania, the Northern Territory and the Australian Capital Territory. The small numbers and volatile nature of these data makes reliable estimation of the seasonal pattern very difficult.

10 Seasonally adjusted series are calculated for the 'Passenger vehicles', 'Other vehicles' and 'Total vehicles' series for each State and Territory and are aggregated to obtain the total for Australia.

11 Seasonal adjustment factors are analysed and revised as necessary annually.

TREND ESTIMATES

12 The smoothing of seasonally adjusted series to create trend estimates reduces the impact of the irregular component of the seasonally adjusted series. The trend estimates are derived by applying a 13-term Henderson-weighted moving average to the respective seasonally adjusted series. These trend series are used to analyse the underlying behaviour of the series over time.

13 While this smoothing technique enables trend estimates to be produced for the latest month, it does result in revisions to the trend estimates for the most recent months as data for subsequent months become available. Generally subsequent revisions become smaller and after three months, usually have a negligible impact on the series. Changes in the original data and re-estimation of seasonal factors may also lead to revisions to the trend. For more information, see *A Guide to Interpreting Time Series—Monitoring 'Trends'—an Overview* (Cat. no. 1348.0) or contact the Assistant Director, Time Series Analysis on (02) 6252 6345.

RELATED PUBLICATIONS

14 For a more detailed break-up of the monthly figures presented here, enquiries should be made to Ray Pfrunder on 07 3222 6179 or to any ABS office. Additional statistics, including registrations of trailers and caravans, are also available in the Special Data Service, *New Motor Vehicle Registrations, Australia* (9303.0.40.003). Data on total vehicle registrations are published annually in *Motor Vehicle Census, Australia, 31 October 1998* (Cat. no. 9309.0).

SYMBOLS AND OTHER USAGES

n.p. not available for publication, but included in totals.

G L O S S A R Y

Articulated trucks	Vehicles constructed primarily for load carrying consisting of a prime mover having no significant load carrying area but with a turn table device which can be linked to a trailer. With or without a trailer the gross combination mass will be 3.5 tonnes or more.
Buses	Vehicles constructed for the carriage of passengers. Included are all passenger vehicles with 10 seats or more, including the driver's seat.
Light commercial vehicles	Describes goods carrying vehicles less than 3.5 tonnes gross vehicle mass. Included are utilities, panel vans, cab-chassis and forward control vehicles (whether four-wheel drive or not).
Motor cycles	Includes 2 and 3 wheeled mopeds, scooters, motor tricycles and motor cycles with side cars.
Non-freight carrying trucks	Includes specialist vehicles such as ambulances, mobile cranes or vehicles fitted with special purpose equipment and having no goods carrying capacity.
Passenger vehicles	Includes cars, station wagons, four-wheel drive passenger vehicles and forward control passenger vehicles with up to nine seats (including the driver).
Registrations	This includes all registrations processed by the motor vehicle registration authorities in the States and Territories during the relevant period.
Rigid trucks	Vehicles constructed primarily for load carrying with a gross vehicle mass of 3.5 tonnes or more.
VIN	The Vehicle Identification Number (VIN) uniquely identifies each vehicle. Embedded in the number are details of make and model together with other relevant information about the vehicle. The VIN is collected by the motor vehicle registration authorities at the time of registration.

FOR MORE INFORMATION...

- INTERNET* **www.abs.gov.au** the ABS web site is the best place to start for access to summary data from our latest publications, information about the ABS, advice about upcoming releases, our catalogue, and Australia Now—a statistical profile.
- LIBRARY* A range of ABS publications is available from public and tertiary libraries Australia-wide. Contact your nearest library to determine whether it has the ABS statistics you require, or visit our web site for a list of libraries.
- CPI INFOLINE* For current and historical Consumer Price Index data, call 1902 981 074 (call cost 75c per minute).
- DIAL-A-STATISTIC* For the latest figures for National Accounts, Balance of Payments, Labour Force, Average Weekly Earnings, Estimated Resident Population and the Consumer Price Index call 1900 986 400 (call cost 75c per minute).

INFORMATION SERVICE

Data which have been published and can be provided within five minutes are free of charge. Our information consultants can also help you to access the full range of ABS information—ABS user pays services can be tailored to your needs, time frame and budget. Publications may be purchased. Specialists are on hand to help you with analytical or methodological advice.

- PHONE* **1300 135 070**
- EMAIL* **client.services@abs.gov.au**
- FAX* 1300 135 211
- POST* Client Services, ABS, GPO Box 796, Sydney 1041

WHY NOT SUBSCRIBE?

ABS subscription services provide regular, convenient and prompt deliveries of ABS publications and products as they are released. Email delivery of monthly and quarterly publications is available.

- PHONE* 1300 366 323
- EMAIL* subscriptions@abs.gov.au
- FAX* 03 9615 7848
- POST* Subscription Services, ABS, GPO Box 2796Y, Melbourne 3001



2930100003008
ISSN 1323-4528

RRP \$15.00

© Commonwealth of Australia 2000

Produced by the Australian Bureau of Statistics